

InteRa

Integration Radar - Analytical Framework and Tool

CHALLENGE

- Widely acknowledged that informal recycling sector (IRS) cannot be ignored when improving solid waste management (SWM) in developing countries.
- A variety of integration and inclusion efforts aimed at IRS can be found in different countries across the world.
- Design and implementation of balanced, successful inclusion programme requires consideration of many interfaces with different system parts.



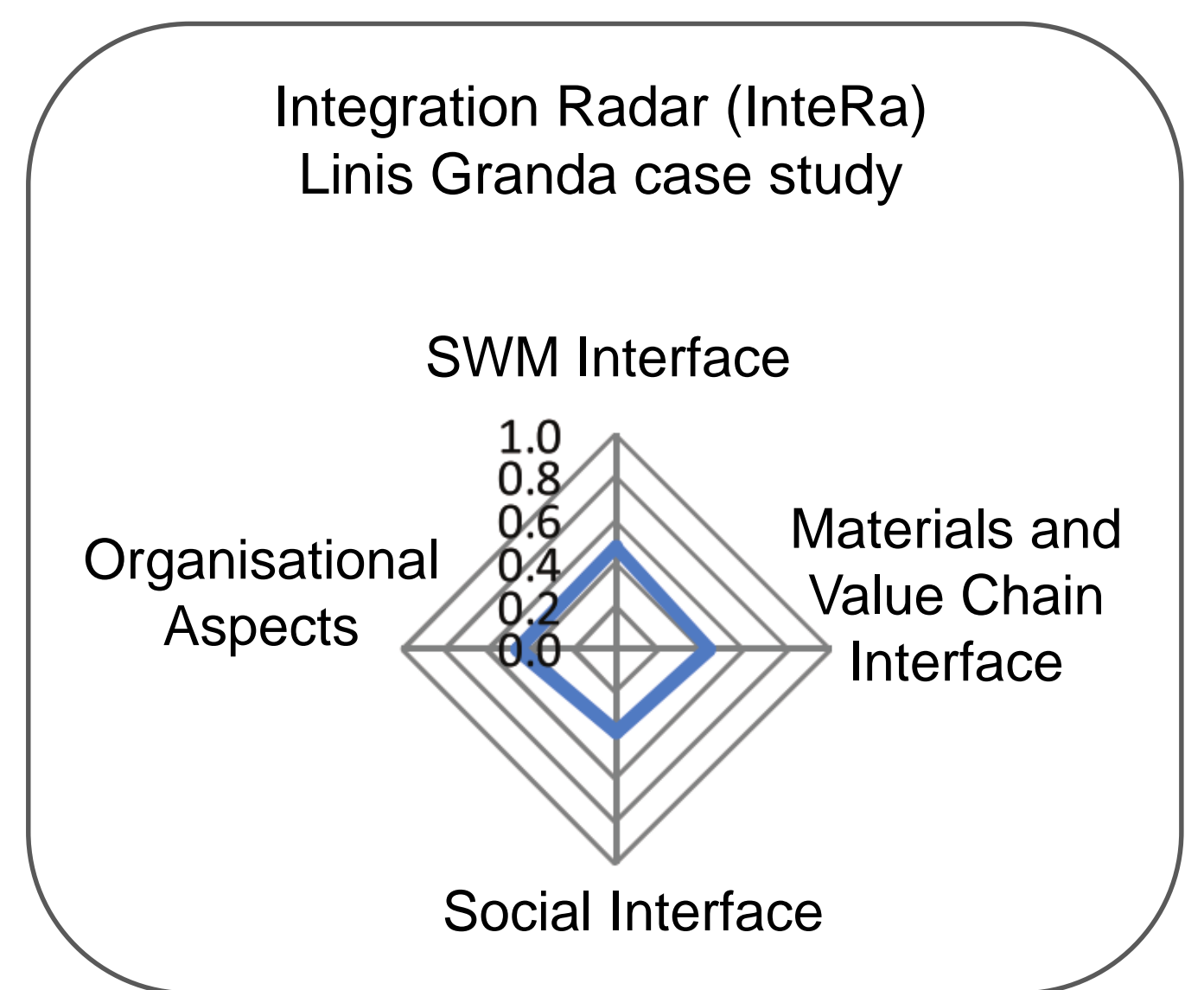
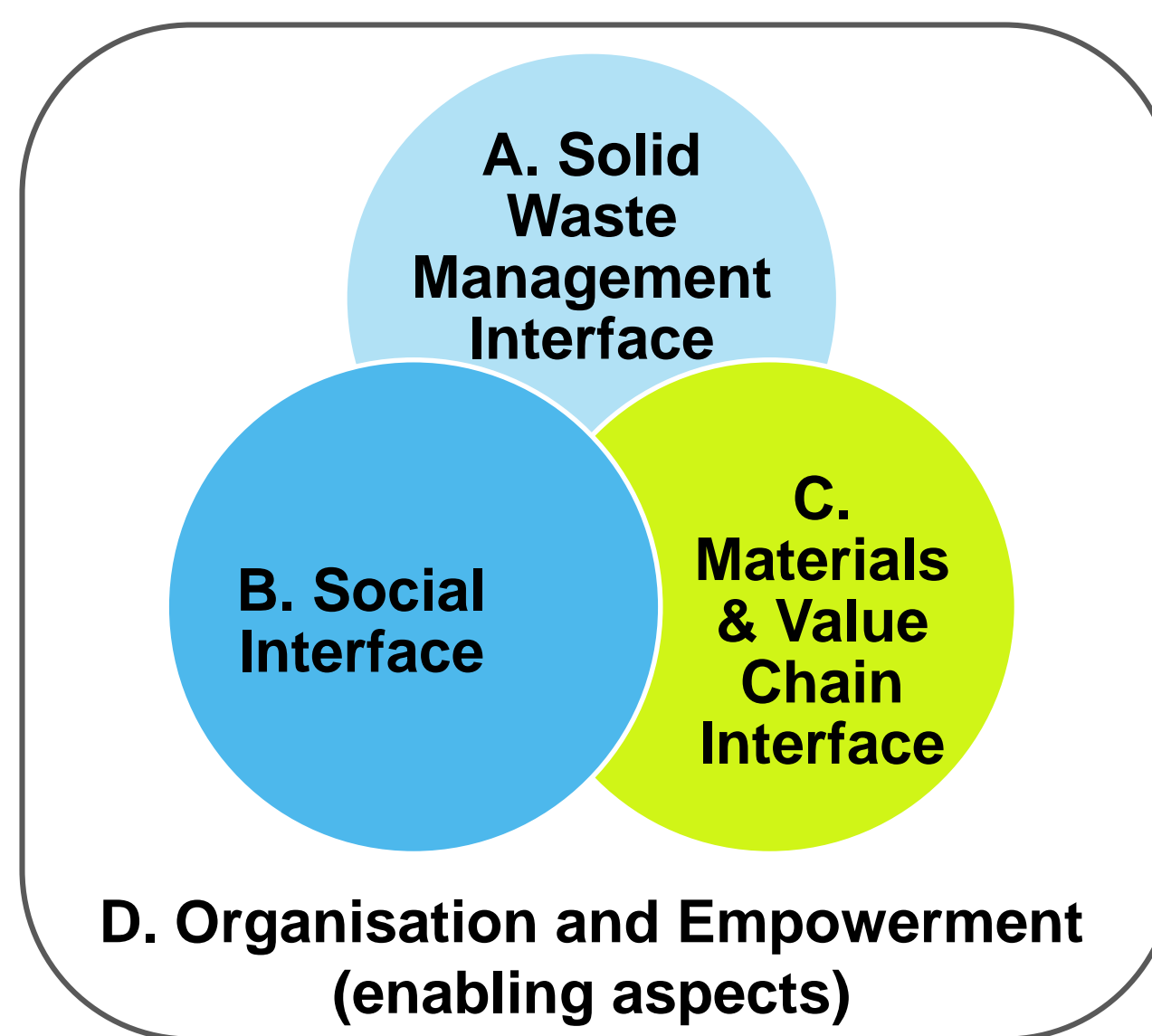
AIM

- Develop novel framework for classifying and analysing possible interventions to promote inclusion of IRS.
- Produce practical tool for evaluating and visualising the focus and balance of such interventions.
- Provide examples by applying the framework tool to a selection of real world case studies.

CASE STUDY

Linis Granda, Philippines

- Founded as an NGO in 1983 to strengthen system for source-separated collection and recycling.
- Helps junk shop owners form cooperatives, access loans, and itinerant waste buyers negotiate access to private housing estates with uniforms, ID, and fixed itineraries.
- Good links with authorities.



DELIVERABLES

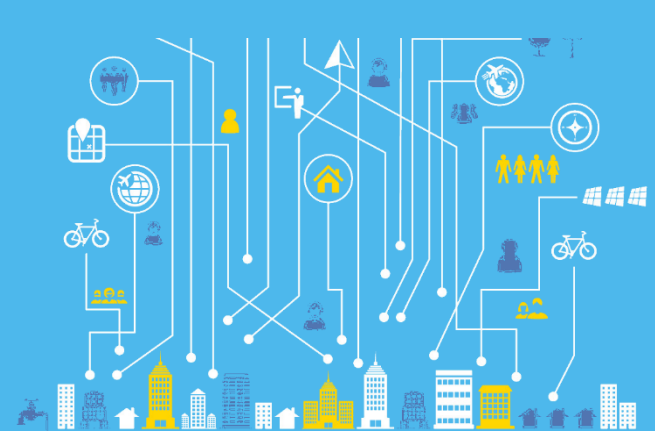
- Analytical framework and tool developed comprising 4 interface categories. Intervention points and actions specified and scored within each category. Scores visualised using radar diagram.
- Academic paper: *An analytical framework and tool ('InteRa') for integrating the informal recycling sector in waste and resource management systems in developing countries* (DOI: 10.1177/0734242X12454934)

USE AND INTERPRETATION

- A priori application - tool applied when new intervention is planned to check balance of approach.
- A posteriori application - tool applied to existing intervention to evaluate baseline and identify improvement opportunities.
- Balanced intervention diagram results in rhombus shape with all sides equidistant from centre.

OUTCOMES

- Framework and tool have since been applied to twelve case studies in six countries.
- Open-access InteRa paper won ISWA Publication Award 2013 for best waste and resource management publication.
- Promoted in Buenos Aires as part of ISWA Globalisation & Waste Management Task Force activities.



RESILIENT
SUSTAINABLE
SOCIETIES &
INFRASTRUCTURE

Cities

Contact: Dr Costas Velis c.velis@leeds.ac.uk

InteRa Team (alphabetical order)
Prof Chris R Cheeseman, Antonis Mavropoulos, Ondina Rocca,
Prof Stephen R Smith, Dr Costas Velis, Prof David C Wilson

March 2017

FUNDING



PROJECT PARTNERS